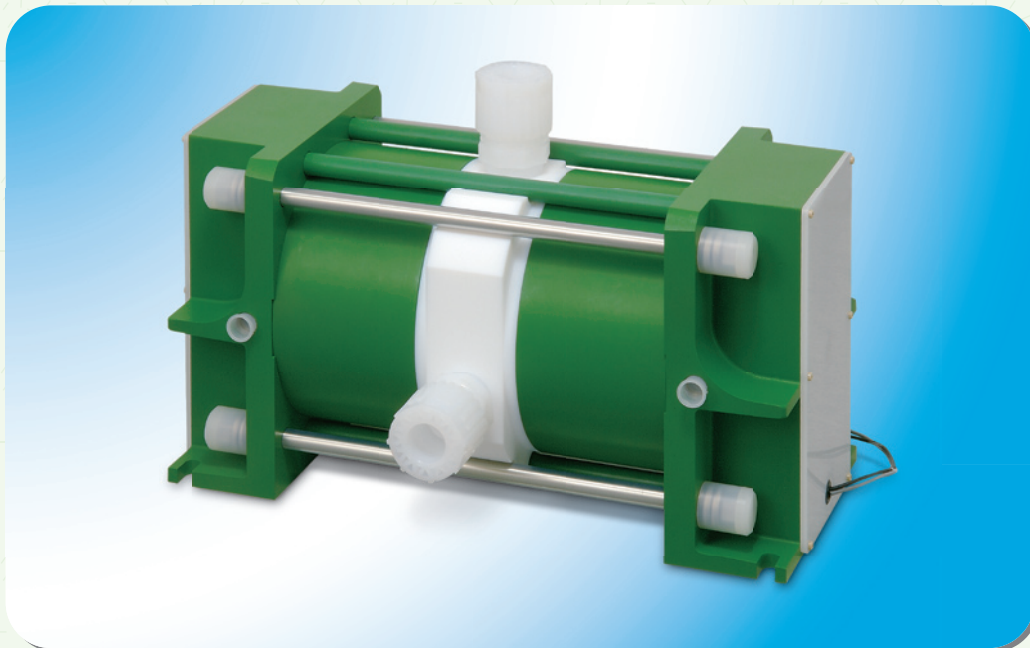


## Compact bellows pump with large flow rate (100L/min)



### Features

- ① Small footprint and large flow rate (100L/min).
- ② This pump can be used for the high discharge head.
- ③ Low pulsation at suction by the countermeasure for water hammer.

| Type   | PK-100H  |         |         |          |
|--|--|---------|---------|----------|
| Pump connections inch(mm)                                      | 1-1/4" (φ31.8)   |         |         |          |
| Pump connectors  | SUPER 300 TYPE PILLAR FITTING                                |         |         |          |
| Max discharge capacity L/min                                   | 121  |         |         |          |
| Operating temp. °C   | 10~40  | 41~100  | 101~140 | 141~180  |
| Supply air pressure MPaG                                       | 0.2~0.7  | 0.2~0.4 | 0.2~0.3 | 0.15~0.2 |
| Max discharge pressure MPaG                                    | 0.65   | 0.35    | 0.25    | 0.15     |
| Allowable differential pressure of bellows MPa                 | 0.4  | 0.3     | 0.2     | 0.15     |
| Discharge capacity per stroke L/stroke *1                      | 1.27   |         |         |          |
| Air consumption L/min(Normal)                                  | 45~1750  |         |         |          |
| Temperature in atmosphere °C                                   | 10~50  |         |         |          |
| Effective cross-section area of solenoid valve mm <sup>2</sup> | over 75  |         |         |          |
| Air source connection  | 2-Rc 1/2"  |         |         |          |
| Weight kg  | 53.5   |         |         |          |
| Pump size mm *2  | Max.533.2 <sup>L</sup> × 235 <sup>B</sup> × 292 <sup>H</sup> |         |         |          |

★ Different size of pump connections may vary the above figure.

★ Specify type of end connection when ordering.

★ We have also explosionproof pumps that are suitable for pumping an explosive organic solution.

★ The length of the suction pipe does not exceed 2m.

★ We have also PC series pumps for CMP slurry, please contact us.

\*1) The Value applies when the standard stroke is selected. Be sure to run the pump at a pumping speed of 90spm or lower.

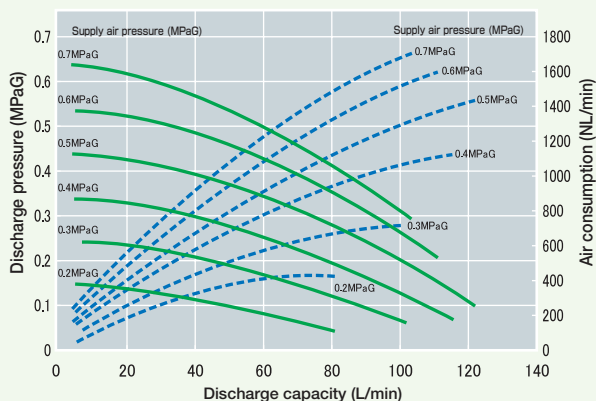
\*2) The reference value of the pump size(cast metal size) is designed under the JIS standard tolerance.

# Performance Curves for PK-100H

HQ PERFORMANCE —  
AIR CONSUMPTION - - -

TEMP : 25°C

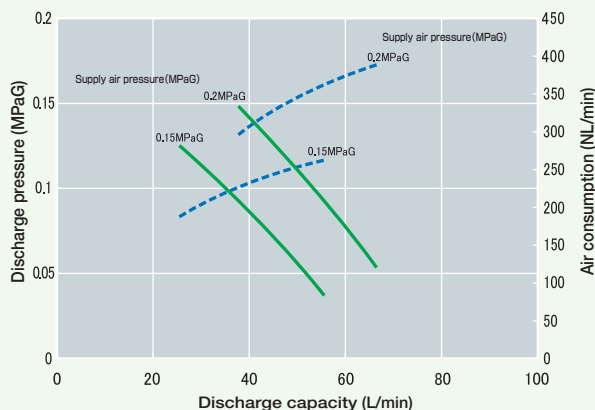
PIPING SIZE FOR AIR :  $\phi 19 \times \phi 15.8$  PIPING SIZE FOR FLUID : IN  $\phi 31.8 \times \phi 28.0$  FLUID : PURE WATER  
OUT  $\phi 31.8 \times \phi 28.0$



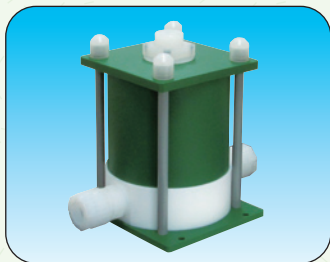
\* NL/min = L/min (Normal)

TEMP : 180°C

PIPING SIZE FOR AIR :  $\phi 19 \times \phi 15.8$  PIPING SIZE FOR FLUID : IN  $\phi 31.8 \times \phi 28.0$  FLUID : H<sub>2</sub>SO<sub>4</sub>  
OUT  $\phi 31.8 \times \phi 28.0$



## AUTO ACCUMULATOR PA SERIES



For more smooth liquid flow, please use this PA series auto accumulator together with PK series bellows pump.

| Auto Accumulator Type        | PA-100H   |
|------------------------------|---|
| Applicable pumps             | PK-100H   |
| Accumulator connections (mm) | 1-1/4" ( $\phi 31.8$ )  |
| Accumulator connectors       | SUPER 300 TYPE PILLAR FITTING   |
| Pulsation pressure range     | Within $\pm 12.5\%$ of the pump discharge pressure when the pressure is over 0.2MPaG.<br>Less than 0.04MPa when pump discharge pressure is under 0.2MPaG. |
| Air source connection (inch) | Rc 1/4"   |
| Weight (kg)                  | 22.0  |
| Accumulator size (mm)        | *1 228 <sup>L</sup> × 265 <sup>W</sup> × 328 <sup>H</sup>   |

\*1) The reference value of the pump size (cast metal size) is designed under the JIS standard tolerance.

### NIPPON PILLAR PACKING CO., LTD

Head Office : 11-48, Nonakaminami 2 Chome, Yodogawa-ku, Osaka, 532-0022 Japan.  
Tel : 81-(0)6-6305-2821 Fax : 81-(0)6-6302-3300  
E-mail : info@pillar.co.jp

Nippon Pillar Corporation of America : 1562, Parkway Loop, Suite2C, Tustin, CA 92780, USA.  
Tel : 1-714-258-7741 Fax : 1-714-258-7760  
E-mail : sales@nipponpillar.com

Nippon Pillar Singapore Pte, Ltd. : No. 237 Pandan Loop, #03-01 Westech Building, Singapore 128424  
Tel : (65)6861-7138 Fax : (65)6862-9098  
E-mail : npillars@singnet.com.sg

Taiwan Pillar Industry Co.,Ltd. : 8F., No.45, SEC.1, MINQUAN E. RD., ZHONGSHAN DIST., TAIPEI CITY., 10452, TAIWAN.  
Tel : TAIPEI(886) 2-2587-1911 Fax : TAIPEI(886) 2-2585-3131  
URL:http://www.taiwanpillar.com.tw/ E-mail: sales@taiwanpillar.com.tw

Shanghai Pillar Trading Co.,Ltd. : Far East International Plaza A-1111, No.319, Xianxia Road, Changning District, Shanghai China. (200051)  
Tel : CHINA(86) 21-6208-7711 Fax : CHINA(86) 21-6235-0501  
URL:http://www.pillar-cn.com/ E-mail: sales@sh.pillar-cn.com

Nippon Pillar Packing Co.,Ltd. India Liaison Office : 111(old no.46),4th Main Road, Gandhi Nagar, Adayar, Chennai 600 020, India  
Tel : +91-44-3299-1422

<http://www.pillar.co.jp/> e-mail : info@pillar.co.jp

\*Specifications and dimensions are subject to change without prior notice.

\*The data on this catalogue are solely for your reference and are not to be construed as constituting a warranty.



Follow the instructions, before installation and operation, for your safety.